

27 Phillip Street, Pontypridd, CF37 1LY

£120,000

**** Ideal First Time Purchase ** Modern Kitchen & Bathroom ** No Chain ****

A mid terraced house offering excellent opportunity for first time buyers.

Comprising entrance hall, good size lounge/diner, contemporary kitchen with oven & hob, two bedrooms and modern, first floor bathroom.

There is a rear garden with basement storage together with double glazing and gas central heating. The property is in need of a little TLC but never the less offers excellent potential to get on the property ladder. Offered with no onward chain.

Entrance Hall

Double glazed entrance door, radiator, coved ceiling.

Lounge/Diner 20'10" x 10'6" (6.37 x 3.21)



Double glazed window to front and rear, two radiators, understairs storage cupboard.

Kitchen 8'2" x 6'11" (2.49 x 2.11)



Modern kitchen with a range of grey base cupboards, stainless steel sink unit, gas hob and electric oven with extractor hood above, space for washing machine and fridge/freezer, double glazed windows to side and rear, half glazed door to side.

First Floor Landing

Double glazed window to rear, coved ceiling, airing cupboard with gas combination boiler.

Bedroom 1 12'0" x 8'2" (3.66 x 2.51)



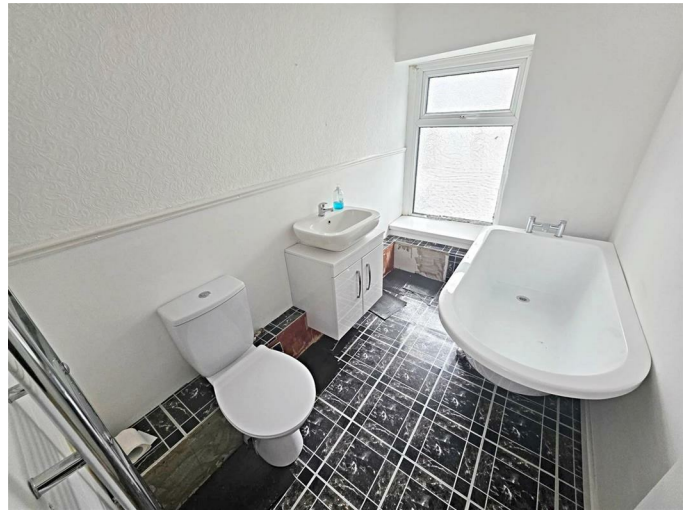
Double glazed window to front, radiator, coved ceiling.

Bedroom 2 8'4" x 8'2" (2.56 x 2.50)



Double glazed window to rear, radiator, coved ceiling.

Bathroom



Modern three piece suite in white, comprising freestanding bath, wc, wash hand basin, chrome heated towel rail, coved ceiling, attic access, double glazed window to front.

Outside

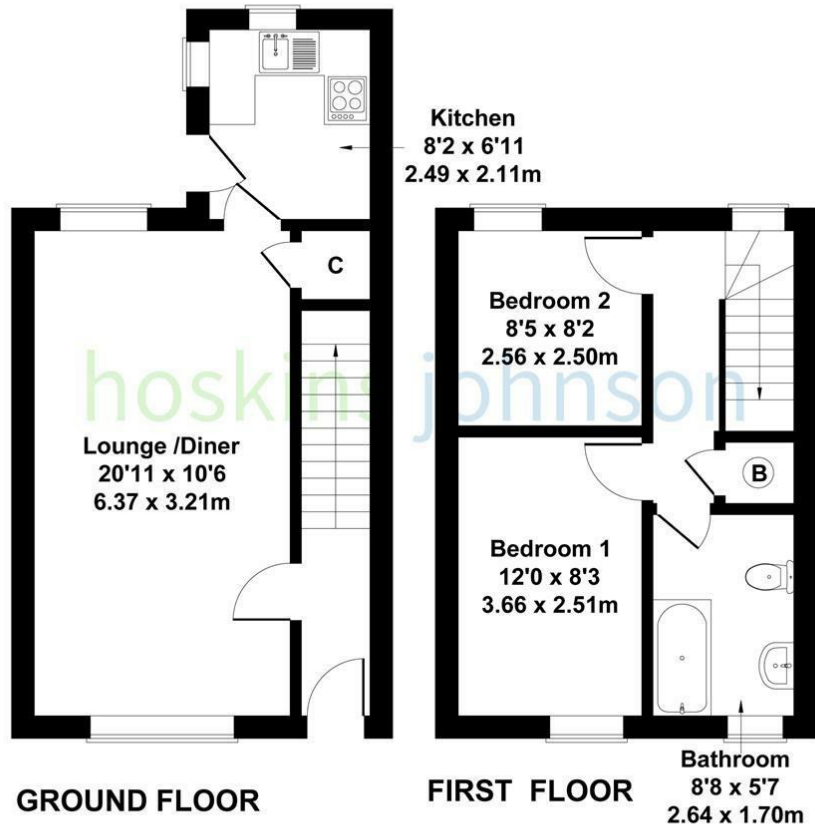


Rear garden with basement storage area.

Floor Plan

27 Phillip Street, Graig

Approximate Gross Internal Area
667 sq ft - 62 sq m

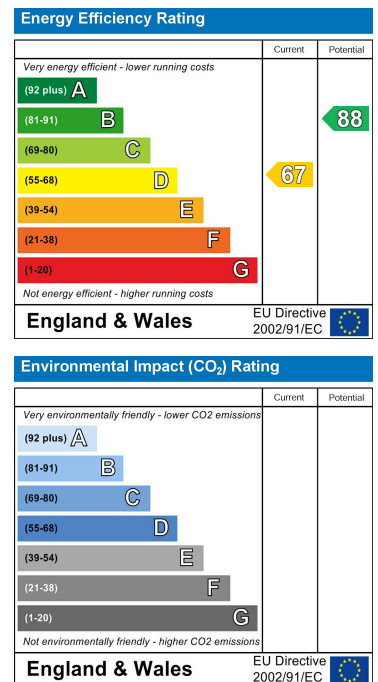


Not to Scale. Produced by The Plan Portal 2026
For Illustrative Purposes Only.

Area Map



Energy Efficiency Graph



These particulars, whilst believed to be accurate are set out as a general outline only for guidance and do not constitute any part of an offer or contract. Intending purchasers should not rely on them as statements of representation of fact, but must satisfy themselves by inspection or otherwise as to their accuracy. No person in this firm's employment has the authority to make or give any representation or warranty in respect of the property.